

*Robert Mapplethorpe*



*Patty Smith*  
1987  
Silver gelatin print  
51 x 61 cm



*American Flag*

1977

Silver gelatin print

35 x 35 cm



*Philip*  
1979  
Silver gelatin print  
35 x 35 cm



*Orchids*

1980

Silver gelatin print

35 x 35 cm



galeria  
**SENDA**

Teléfono 934 876 759  
Fax 934 882 199  
info@galeriasenda.com  
www.galeriasenda.com  
Consell de Cent, 337  
08007 Barcelona



*Lisa Lyon*

1980

Silver gelatin print

35 x 35 cm



*Lisa Lyon*  
1980  
Silver gelatin print  
35 x 35,5 cm



*Clifton*  
1981  
Silver gelatin print  
38,5 x 38 cm



*Hands*

1981

Silver gelatin print

35 x 28 cm

galeria  
SENDA

Teléfono 934 876 759  
Fax 934 882 199  
info@galeriasenda.com  
www.galeriasenda.com  
Consell de Cent, 337  
08007 Barcelona



*Lisa Lyon*

1981

Silver gelatin print

38,5 x 38,5 cm



*Milton Moore*

1981

Silver gelatin print

38 x 38 cm



*Lisa Lyon*  
1982  
Silver gelatin print  
38,5 x 38,5 cm



*Lisa Lyon*

1982

Silver gelatin print

38,5 x 38,5 cm





*Maybelle*  
1982  
Silver gelatin print  
48,5 x 38,5 cm



*Lisa Lyon*  
1982  
Silver gelatin print  
38,5 x 38,5 cm



*Lisa Lyon*  
1982  
Silver gelatin print  
48,5 x 38,5 cm



*Rose*  
1982  
Silver gelatin print  
38 x 38 cm



*Jack Walls*  
1982  
Silver gelatin print  
38,5 x 48 cm



*Rose*  
1983  
Silver gelatin print  
48 x 38 cm

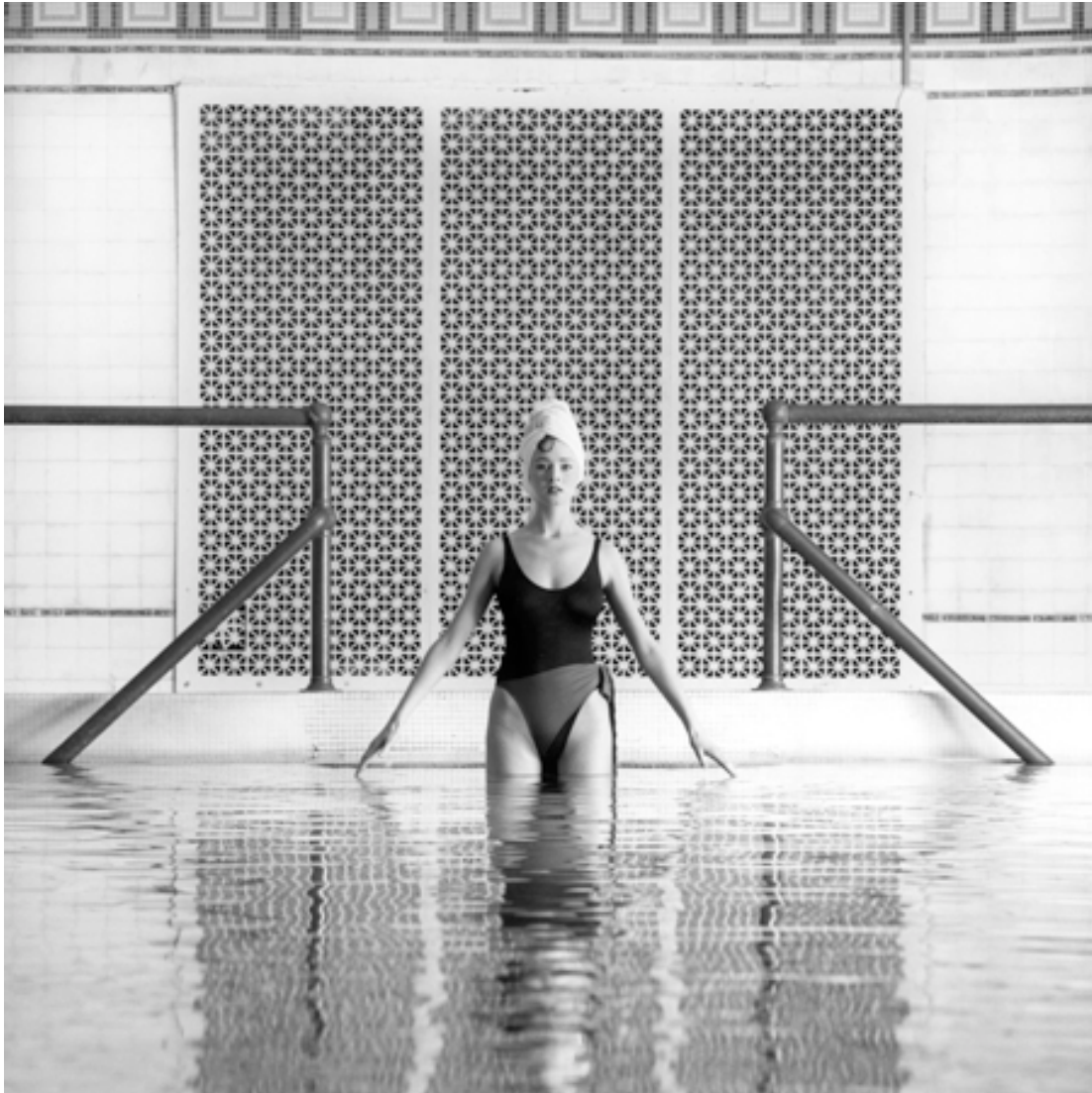


*Flower*

1983

Silver gelatin print

38 x 38 cm



*Italian Vogue*

1984

Silver gelatin print

38 x 38 cm





*American Flag*

1977

Silver gelatin print

48 x 58 cm



*Margarita*  
1985  
Silver gelatin print  
50 x 40 cm

## ROBERT MAPPLETHORPE

Vernissage: September 27<sup>th</sup>, 19:30

Open: Tuesday-Saturday, from 11:00- 20:00

**Galeria SENDA is pleased to present its third solo exhibition by photographer Robert Mapplethorpe (New York, 1946 - Boston, 1989). The exhibition will be comprised of Mapplethorpe's Silver Gelatin prints. We are proud to let the art of Mapplethorpe open the new season in a joint project with Asociación Art Barcelona.**

After the exhibition "Flowers" in 2001 and "Black Nude Men" in 2004, the first two solo gallery exhibitions by Mapplethorpe in Barcelona, we are pleased to announce a new exhibition in galeria SENDA. Like the two previous exhibitions, this one is also organized in collaboration with the Robert Mapplethorpe Foundation in New York, and especially with the help of Director Monica Eulitz. Robert Mapplethorpe founded this non-profit Foundation in 1988 about ten months before he died. He wanted to secure his creative legacy, promote the recognition of photography as a fine art form and support medical research in the area of HIV infection and AIDS.

The exhibition consists of a selection of 20 works on different subjects united by one technique, the Silver Gelatin print. The works are characteristic of Mapplethorpe, however, some of the photographs are not widely known or often published. One of the purposes of this exhibition is to familiarize our audience with lesser-known works of Mapplethorpe.

Galeria SENDA has developed a program of photography. Amongst the many actors involved in the contemporary art system, art galleries play a fundamental role in the contemporary artistic process. Galleries approach the audience with contemporary artworks, and our role is to be a bridge between artists and society. With this exhibition we would like to strengthen our position as an advisor to cultural institutions and private collectors when they are in search of appropriate works to purchase.

Robert Mapplethorpe was born in Floral Park, Queens in 1946. In 1969 he concluded his studies at The School of Art at the Pratt Institute. There he developed skills in painting, drawing and in sculpture. He had not yet started to make his own photographs when he began to question authorship and originality, and hence created art, such as collages using pages from books and magazines. This was a concept that had been employed by Man Ray and Duchamp.

Mapplethorpe's early works include studies on sexuality and eroticism, a theme that would continue throughout his career. During the 1980s he created nude photographs with a sculptural appearance of both men and women. Further, his works include delicate still life flowers, and portraits of artists and celebrities with an emphasis on classical formal beauty.

The development of Mapplethorpe's work in the last two decades of his life reveals a strong and consistent view of reality. Through his photographs he attempts to unify antagonistic concepts such as order and disorder, life and death, men and women, all while striving for perfection and balance between substance and form. These photographs show a culmination of his style to a phase dominated by refinement of themes and composition, which insists on a vision of classical beauty, quiet and formal. Mapplethorpe expresses his refined vision of an idealized beauty by combining both abstract and formal elements in his compositions.

If you need more information please contact: [coordinacio@galeriasenda.com](mailto:coordinacio@galeriasenda.com)

Exhibition organized in collaboration with the © Robert Mapplethorpe Foundation. Used by permission.



Exhibition view September 2012